

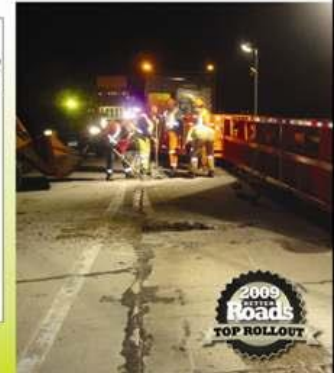
MOBILE BARRIERS™

The Mobile Barriers Trailer (MBT-1)

42' to over 100' of Mobile Work Zone Protection.

Modular. Efficient. Interchangeable right/left configurations. FHWA Accepted at TL-2 & TL-3 under both NCHRP 350 & MASH criteria.

Now Available with Rear Steer



www.mobilebarriers.com

Mobile Barriers LLC • 24918 Genesee Trail Road, Golden, Colorado 80401 • 303-526-5995 • © 2009 Mobile Barriers LLC. All rights reserved.

Mobile Barriers and MUTCD Typical Applications

2010 Annual Meeting
National Committee on Uniform Traffic Control
Temporary Traffic Control Technical Committee
NCUTCD-TTC Arlington, Virginia

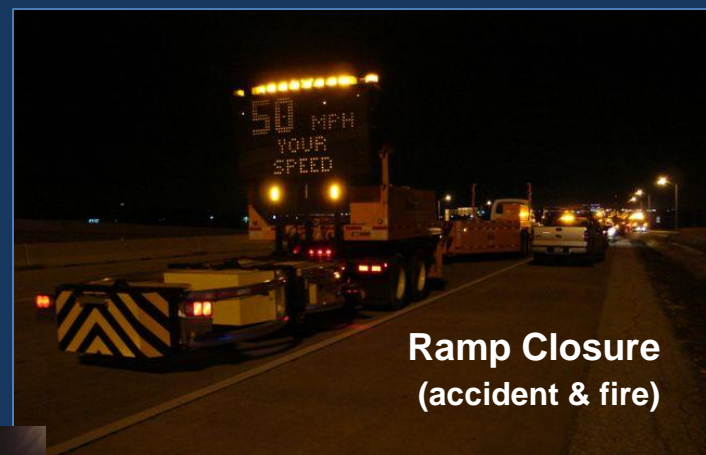
NCUTCD-TTC
Annual Meeting
Arlington, Virginia
Jan 7, 2010



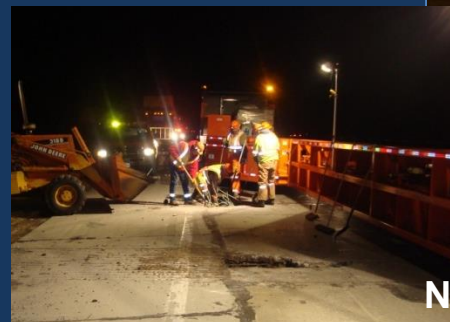
Mobile Barrier
Trailer



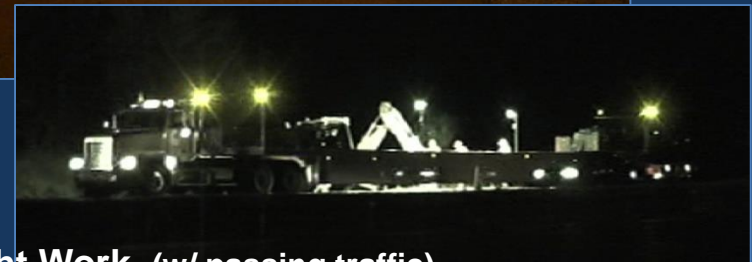
Patching & Repair



Ramp Closure
(accident & fire)



Night Work (w/ passing traffic)



TA-5 Shoulder Closure on Freeway

Figure 6H-5. Shoulder Closure on Freeway (TA-5)

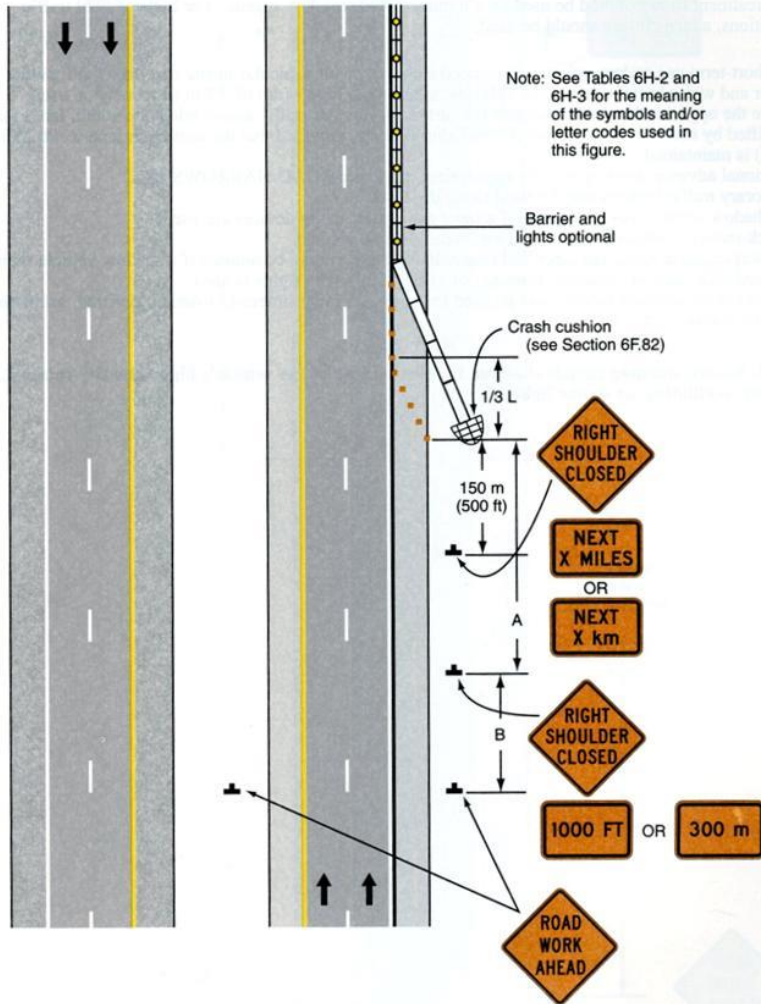
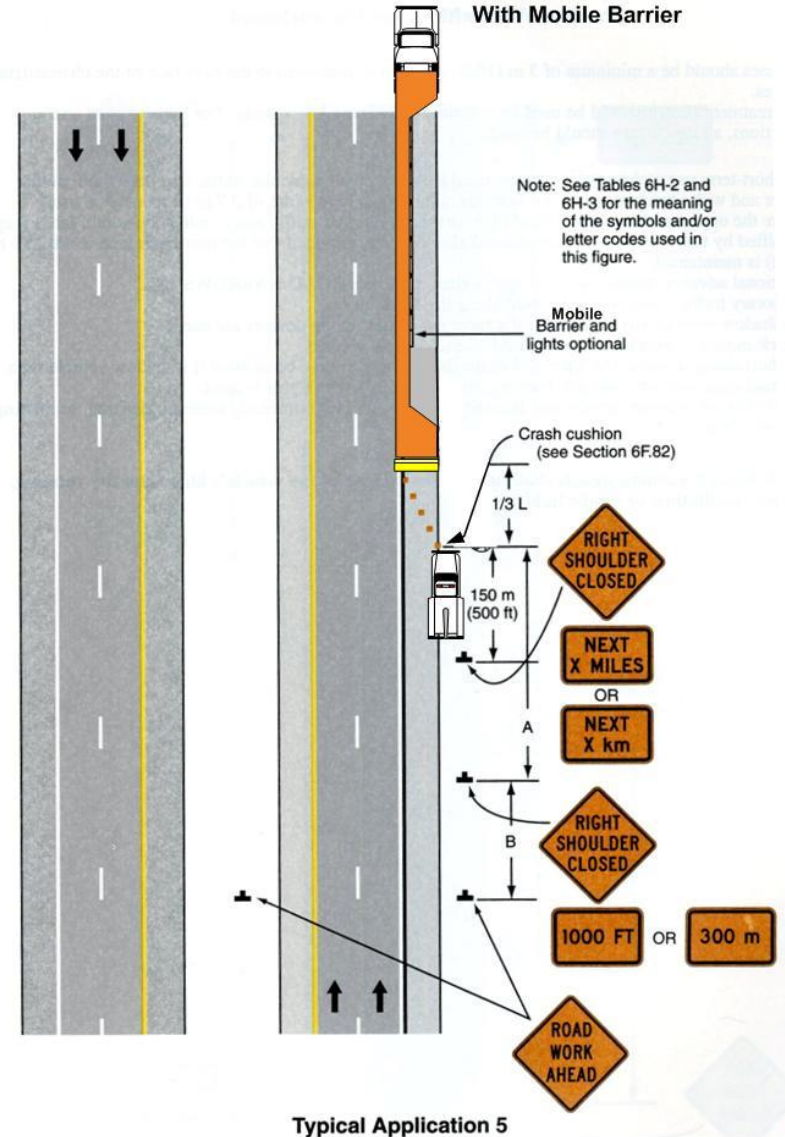


Figure 6H-5. Shoulder Closure on Freeway (TA-5) Modified With Mobile Barrier



TA-6 Shoulder Work with Minor Encroachment

2003 Edition

Page 6H-17

Figure 6H-6. Shoulder Work with Minor Encroachment (TA-6)

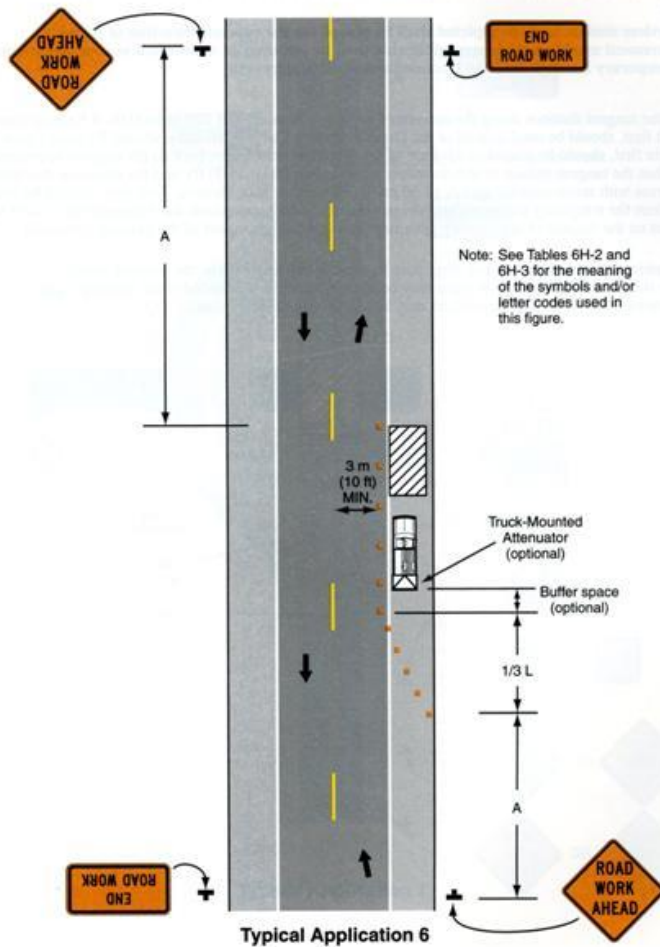
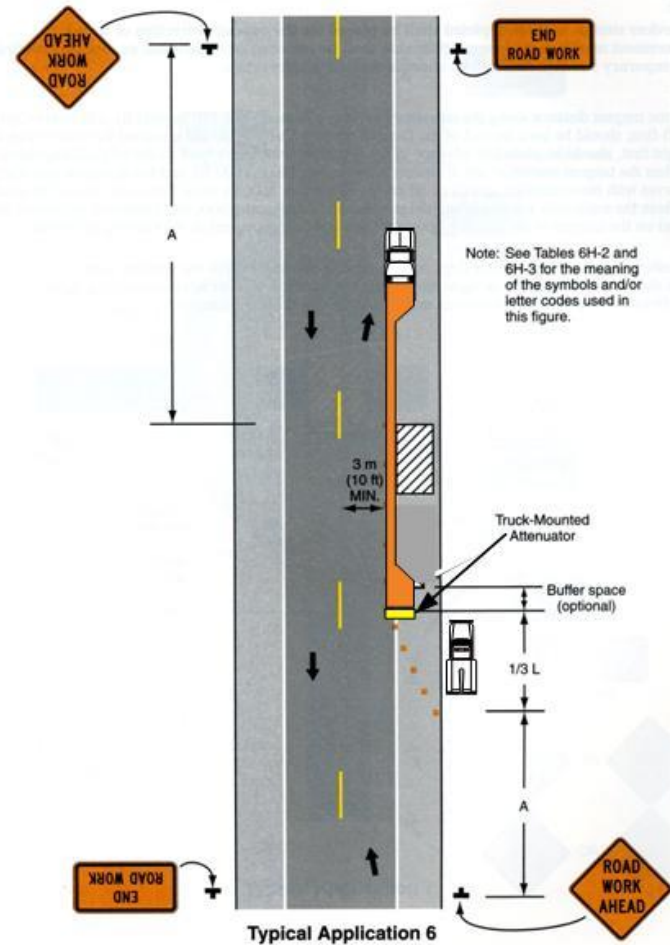


Figure 6H-6. Shoulder Work with Minor Encroachment (TA-6) Modified With Mobile Barrier



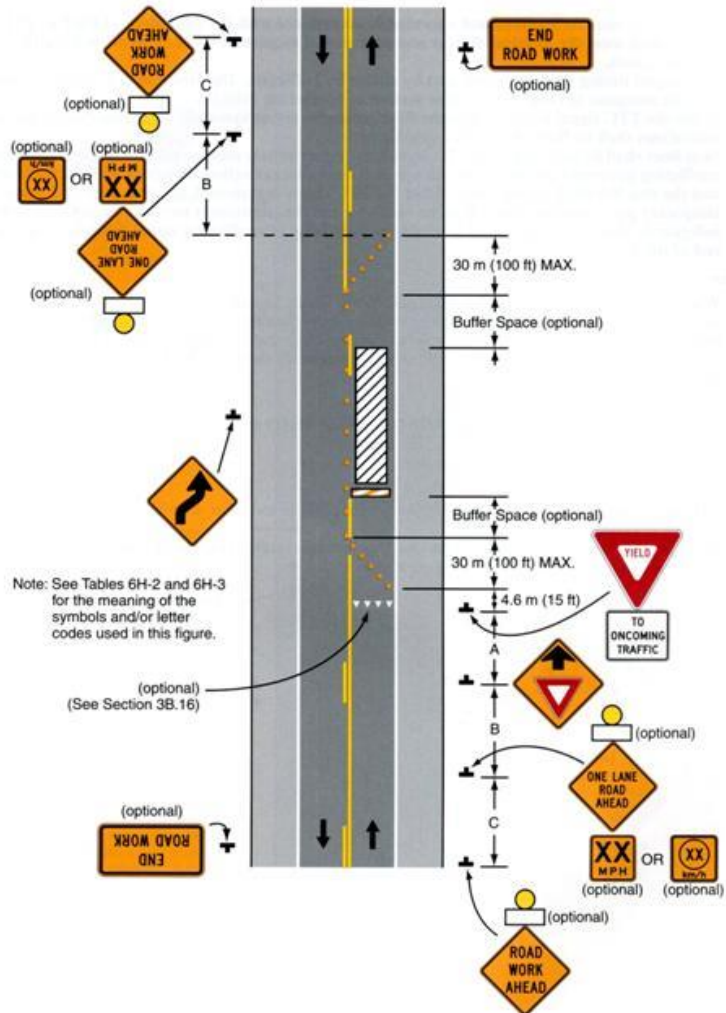
TA-11 Lane Closure on Two-Lane Road with Low Traffic Volumes

2003 Edition

Page 6H-27

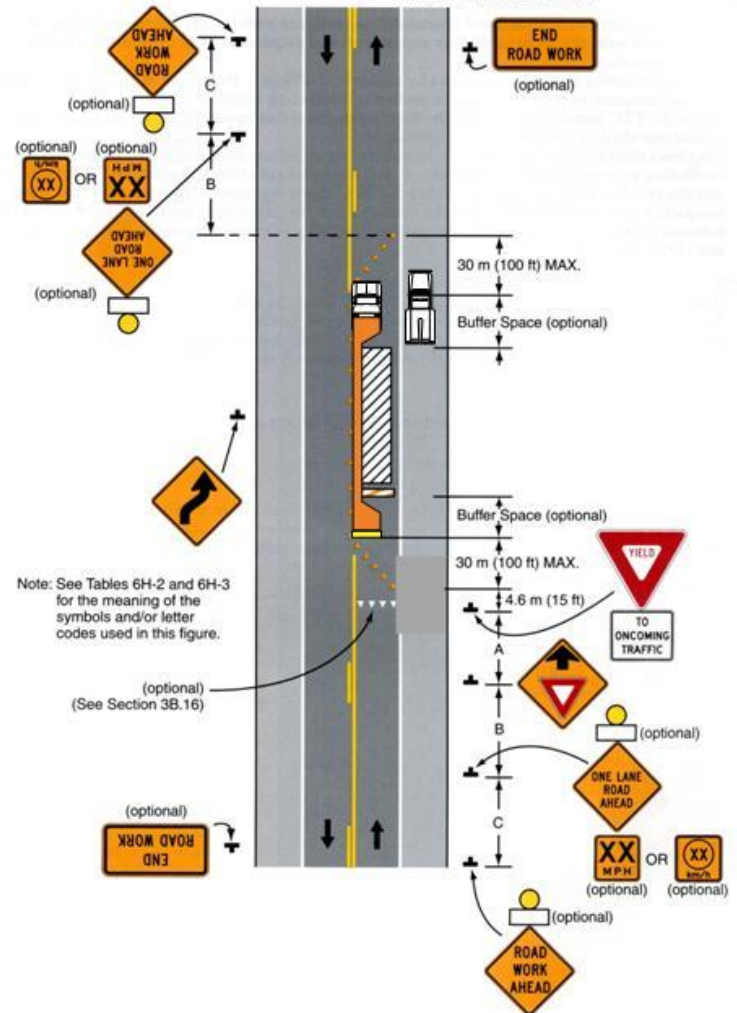
-27

Figure 6H-11. Lane Closure on Two-Lane Road with Low Traffic Volumes



Typical Application 11

Figure 6H-11. Lane Closure on Two-Lane Road with Low Traffic Volumes Modified With Mobile Barrier



Typical Application 11

TA-18 Lane Closure on Minor Street

Figure 6H-18. Lane Closure on Minor Street (TA-18)

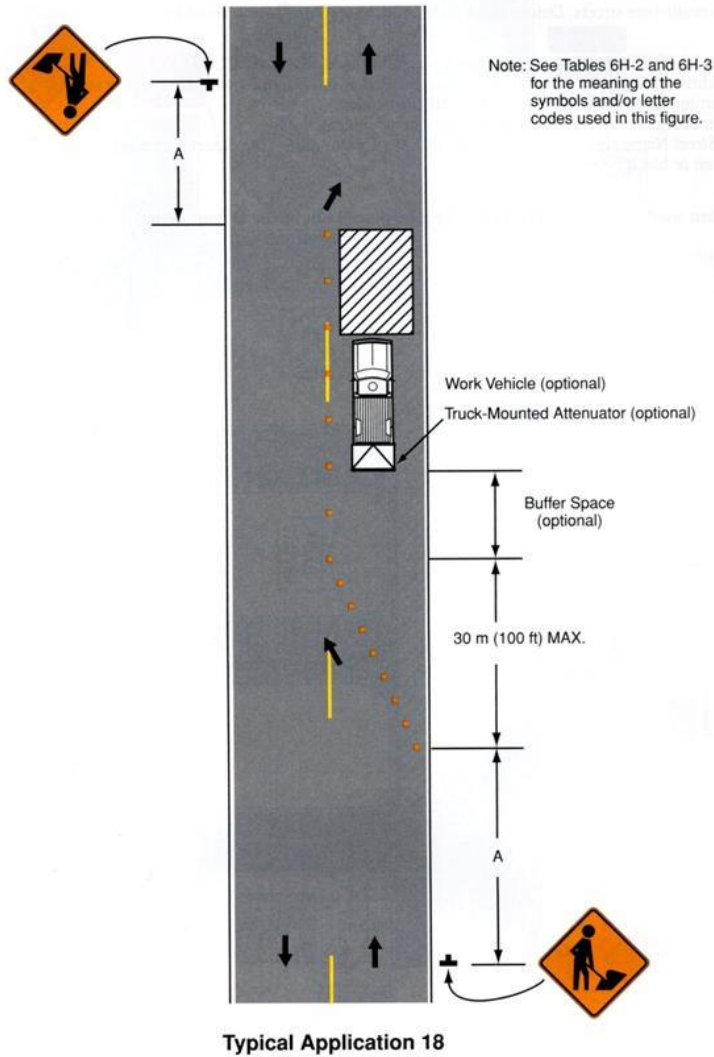
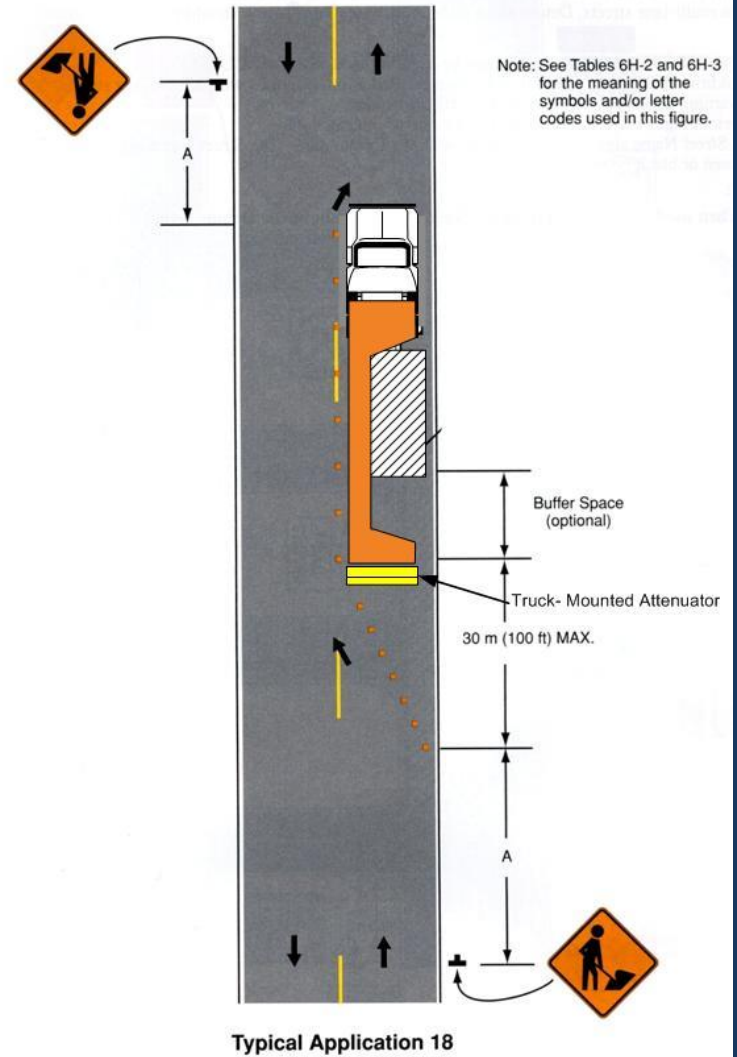


Figure 6H-18. Lane Closure on Minor Street (TA-18) Modified With Mobile Barrier



TA-21 Lane Closure on Near Side of Intersection

2003 Edition

Page 6H-47

Figure 6H-21. Lane Closure on Near Side of Intersection (TA-21)

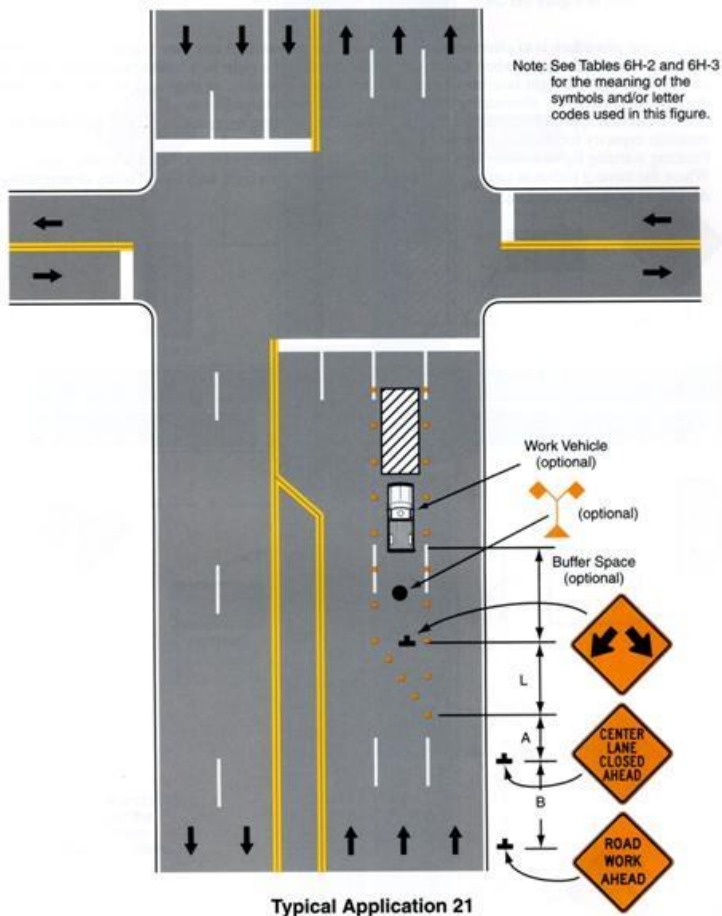
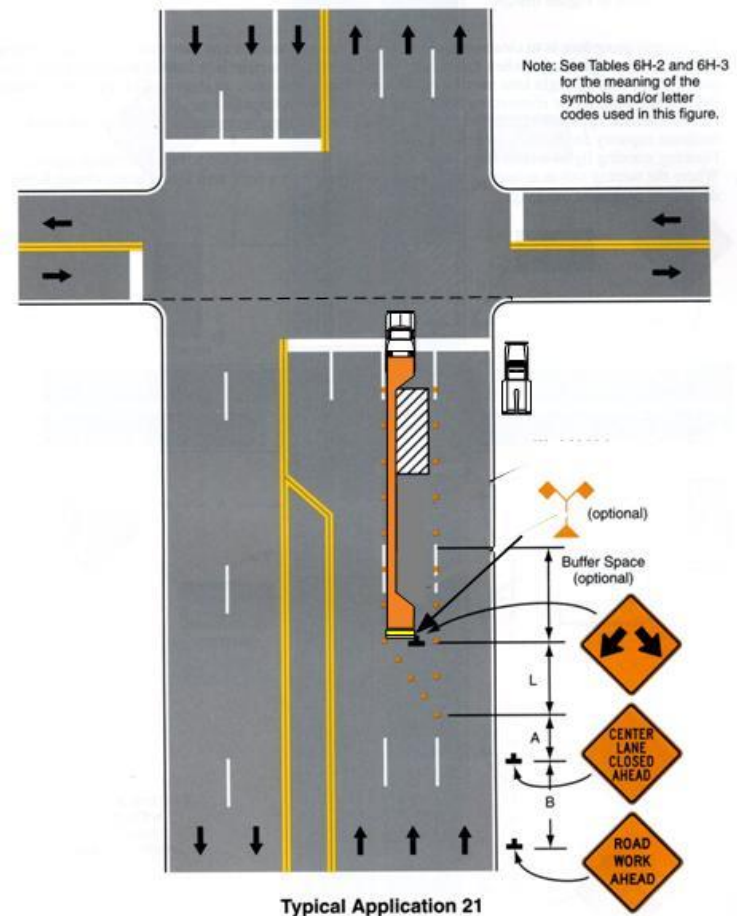
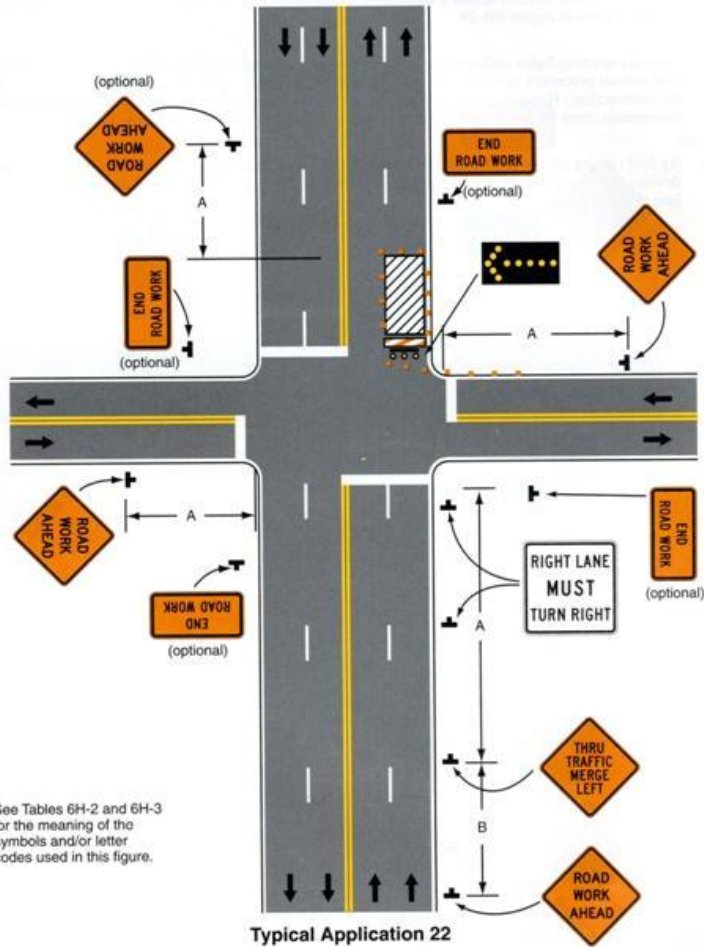


Figure 6H-21. Lane Closure on Near Side of Intersection (TA-21)
Modified With Mobile Barrier



TA-22 Right Lane Closure on Far Side of Intersection

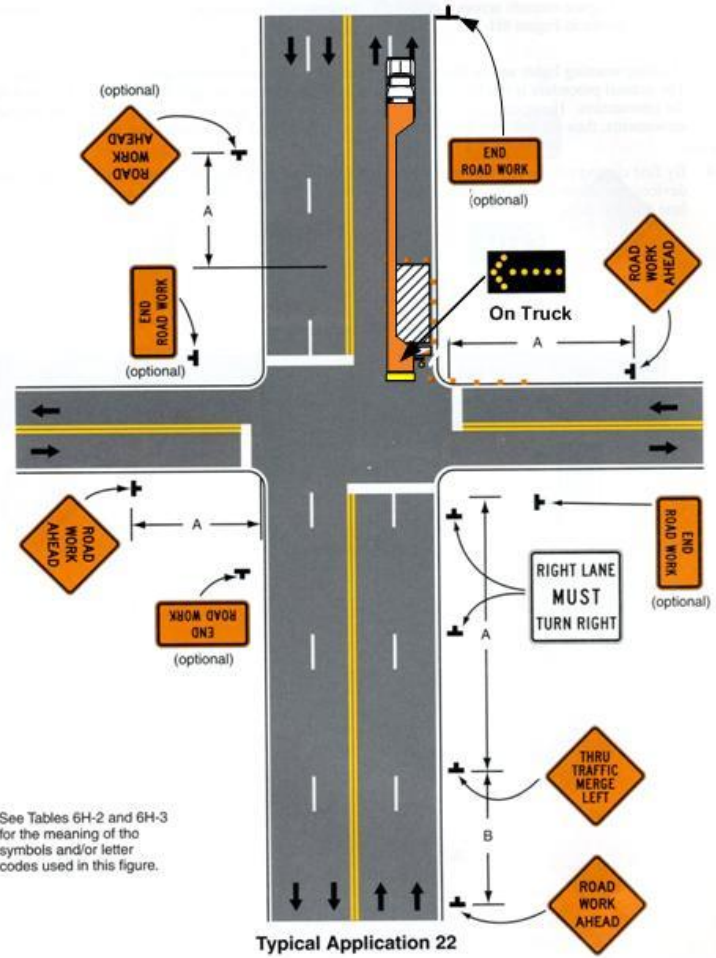
Figure 6H-22. Right Lane Closure on Far Side of Intersection (TA-22)



Note: See Tables 6H-2 and 6H-3 for the meaning of the symbols and/or letter codes used in this figure.

Typical Application 22

Figure 6H-22. Right Lane Closure on Far Side of Intersection (TA-22)
Modified With Mobile Barrier



Note: See Tables 6H-2 and 6H-3 for the meaning of the symbols and/or letter codes used in this figure.

Typical Application 22

TA-23 Left Lane Closure on Far Side of Intersection

Figure 6H-23. Left Lane Closure on Far Side of Intersection (TA-23)

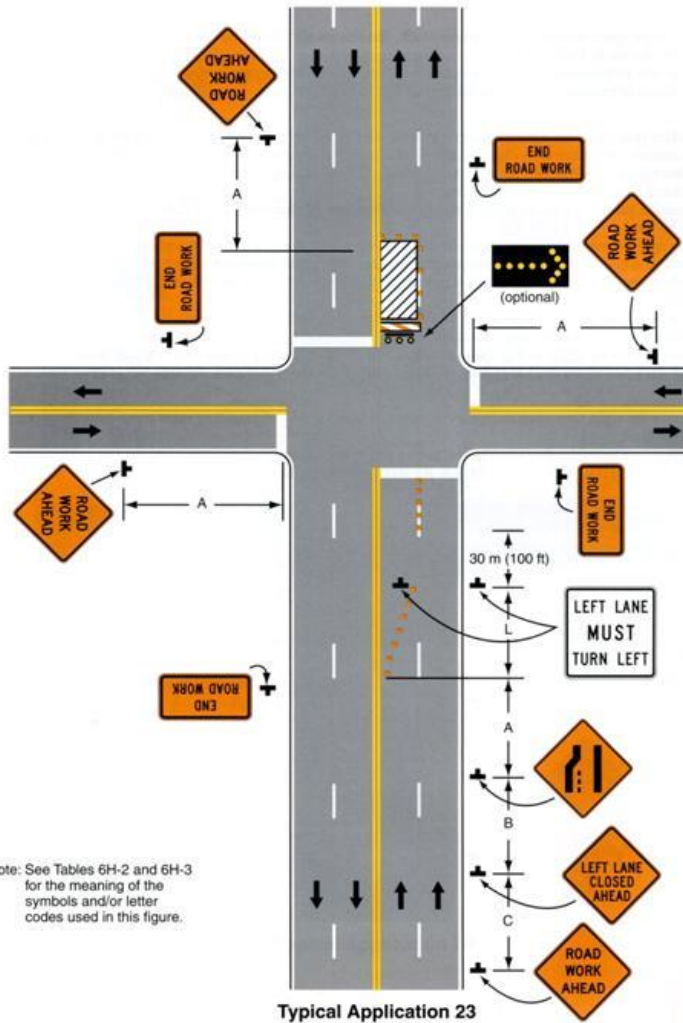
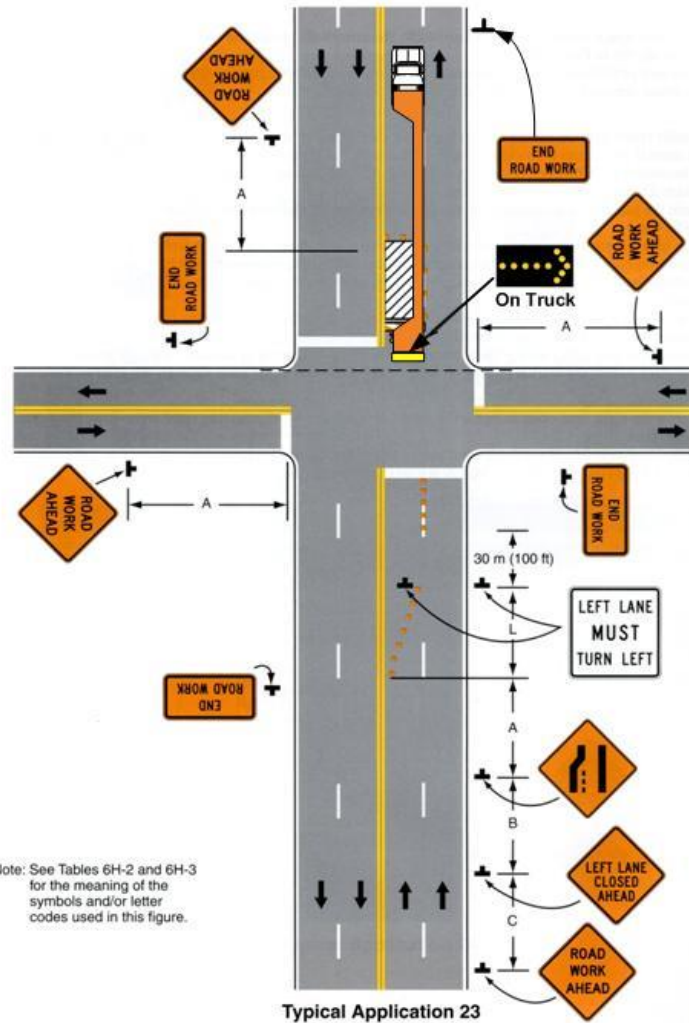
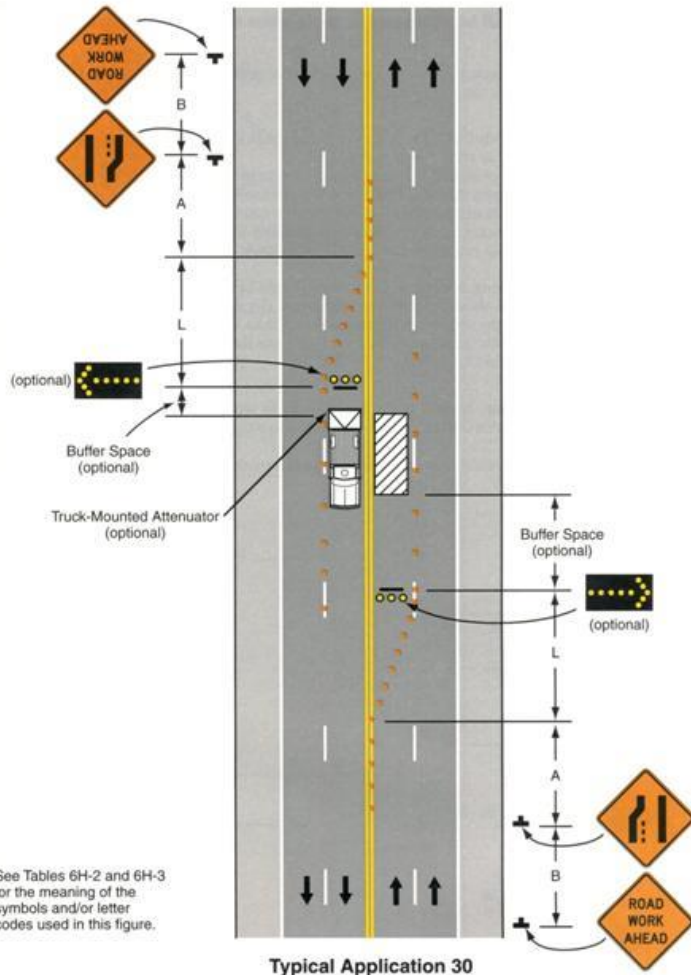


Figure 6H-23. Left Lane Closure on Far Side of Intersection (TA-23) Modified With Mobile Barrier



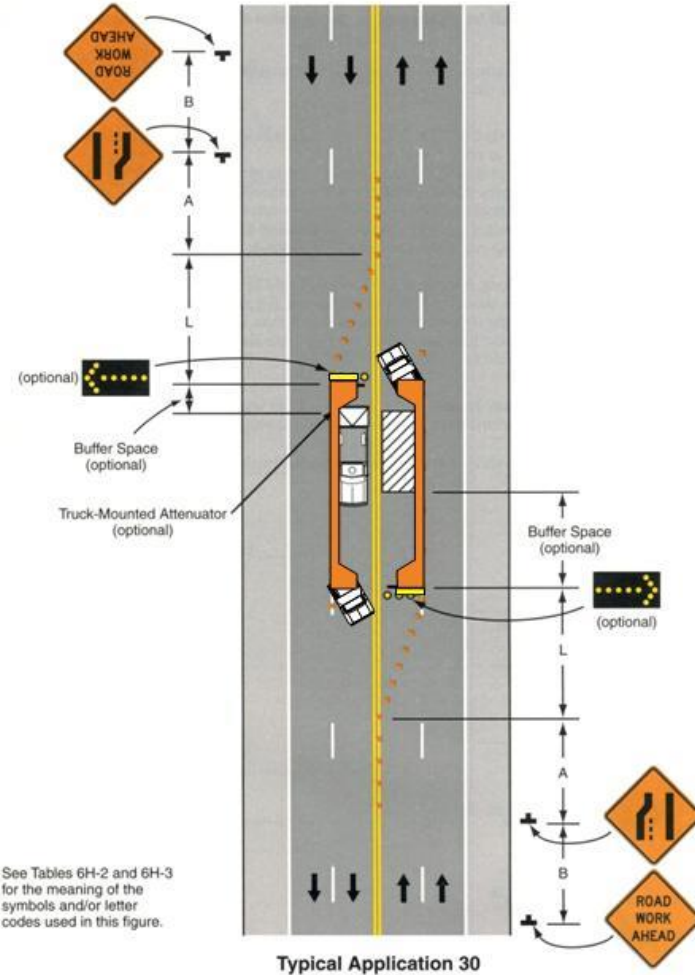
TA-30 Interior Lane Closure on Multi-Lane Street

Figure 6H-30. Interior Lane Closure on Multi-lane Street (TA-30)



Note: See Tables 6H-2 and 6H-3 for the meaning of the symbols and/or letter codes used in this figure.

Interior Lane Closure on Multi-lane Modified With Mobile Barrier



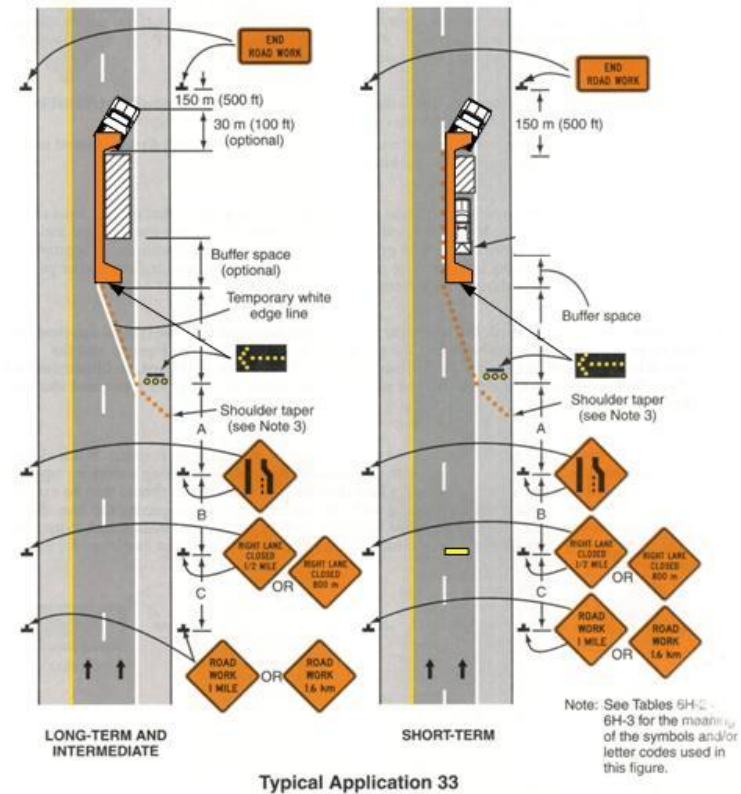
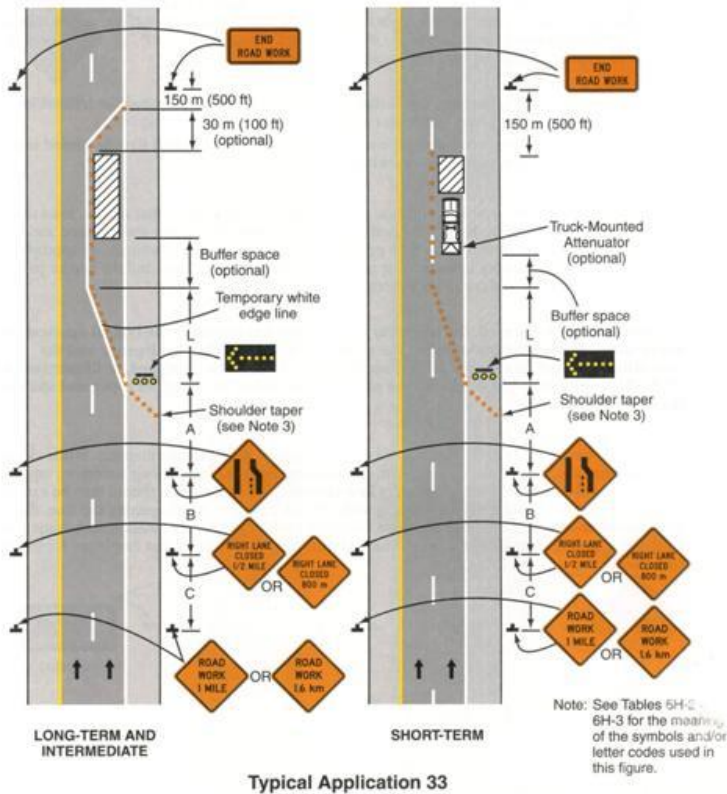
Note: See Tables 6H-2 and 6H-3 for the meaning of the symbols and/or letter codes used in this figure.

TA-33 Stationary Lane Closure on Divided Highway

Figure 6H-33. Stationary Lane Closure on Divided Highway (TA-33)

Stationary Lane Closure on Divided Highway (TA-33) Modified With Mobile Barrier

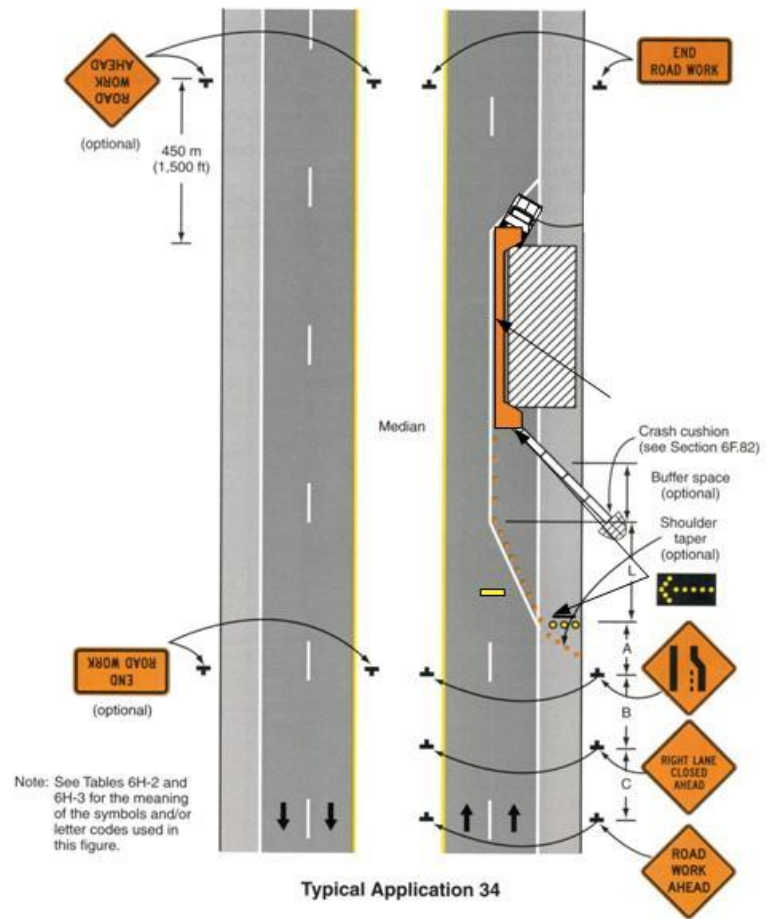
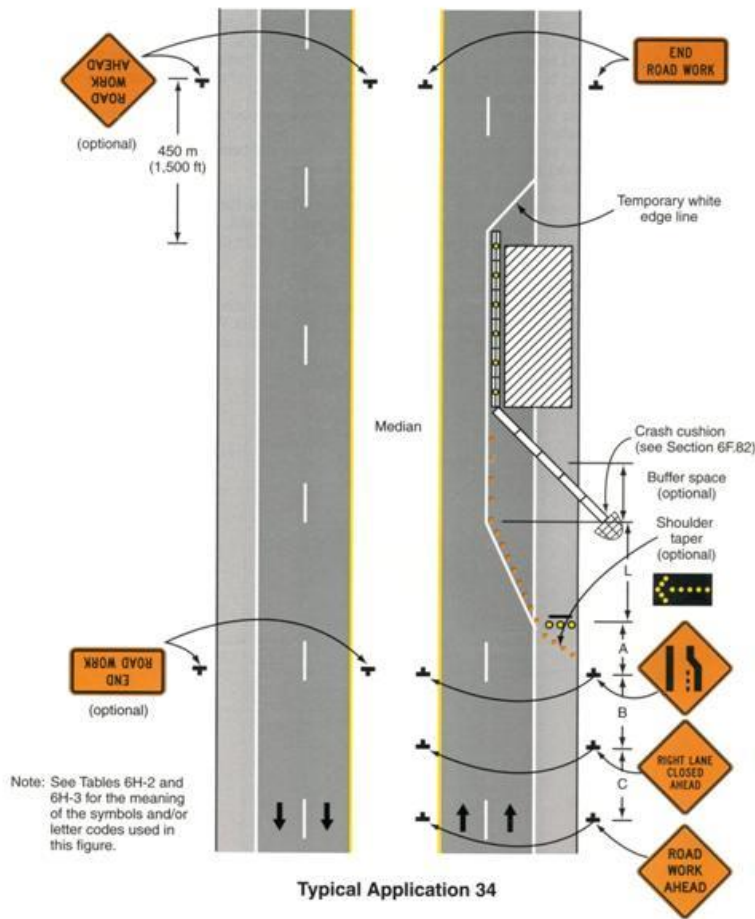
Modified With Mobile Barrier



TA-34 Lane Closure with Temporary Traffic Barrier

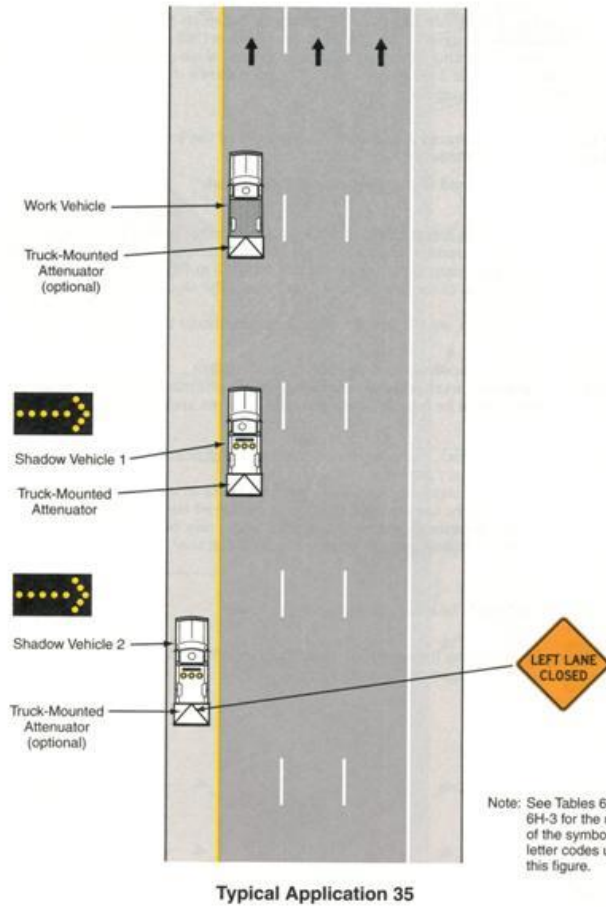
Figure 6H-34. Lane Closure with Temporary Traffic Barrier (TA-34)

Lane Closure with Temporary Traffic Barrier (TA-34)
Modified With Mobile Barrier



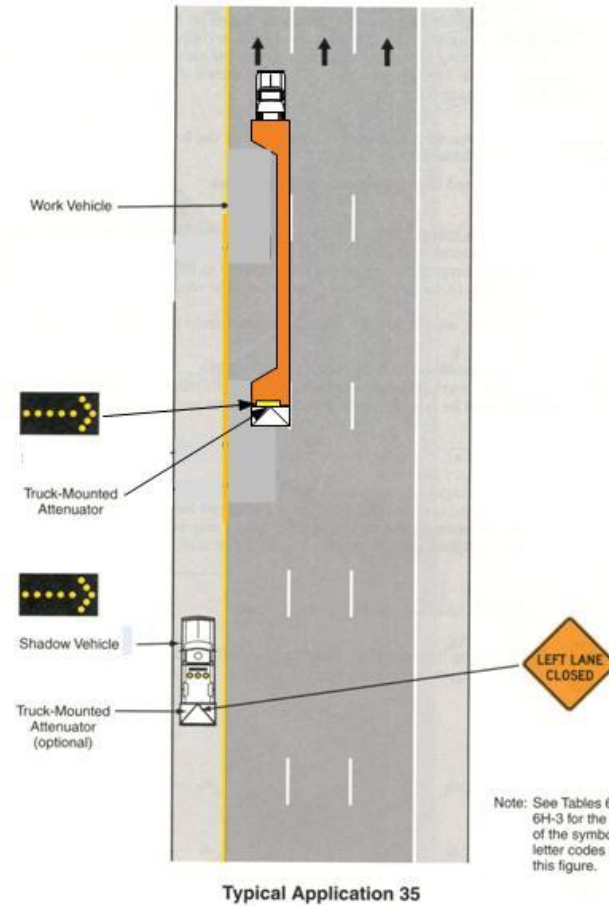
TA-35 Mobile Operation on Multi-Lane Road

Figure 6H-35. Mobile Operation on Multi-lane Road (TA-35)



Note: See Tables 6H-2 and 6H-3 for the meaning of the symbols and/or letter codes used in this figure.

Figure 6H-35. Mobile Operation on Multi-lane Road (TA-35)
Modified With Mobile Barrier



Note: See Tables 6H-2 and 6H-3 for the meaning of the symbols and/or letter codes used in this figure.

TA-36 Lane Shift on Freeway

Figure 6H-36. Lane Shift on Freeway (TA-36)

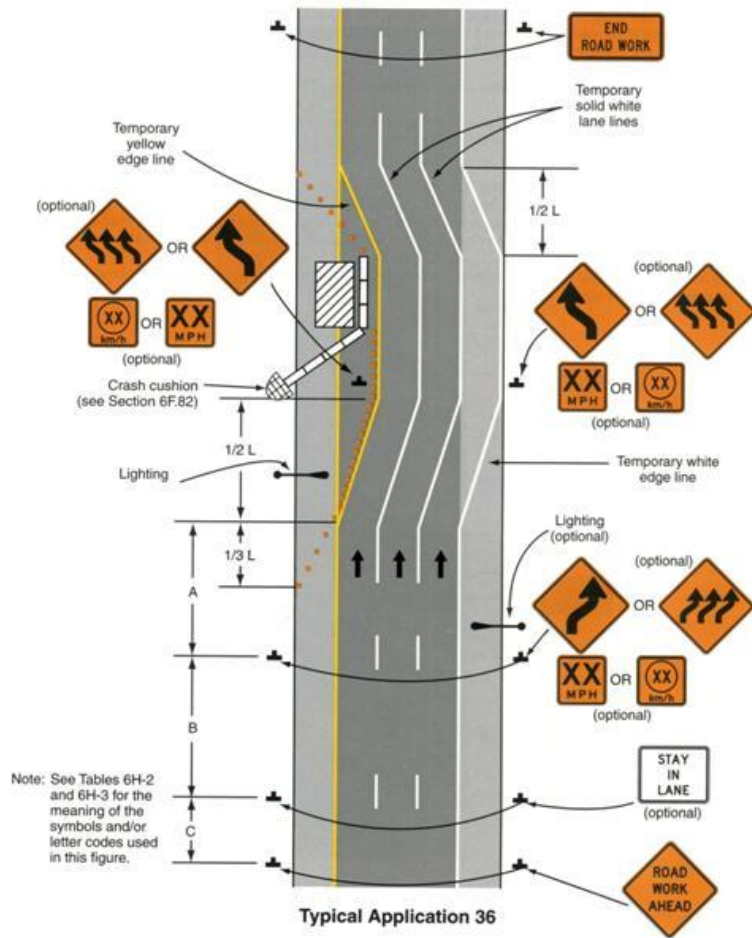
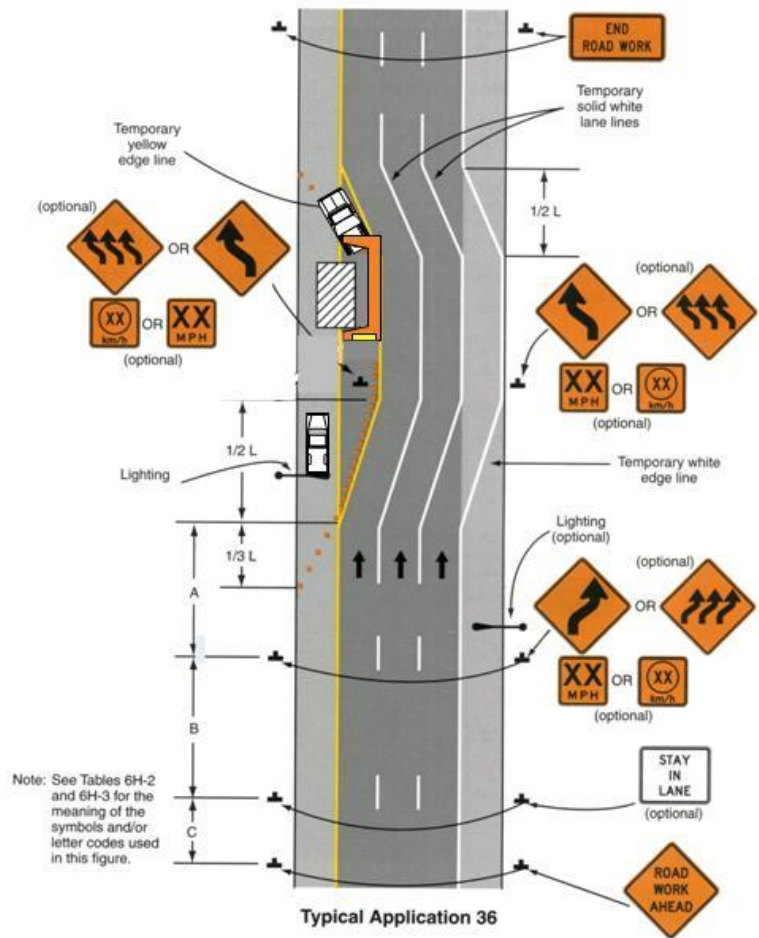


Figure 6H-36. Lane Shift on Freeway (TA-36)
Modified With Mobile Barrier



TA-37 Double Lane Closure on Freeway

Figure 6H-37. Double Lane Closure on Freeway (TA-37)

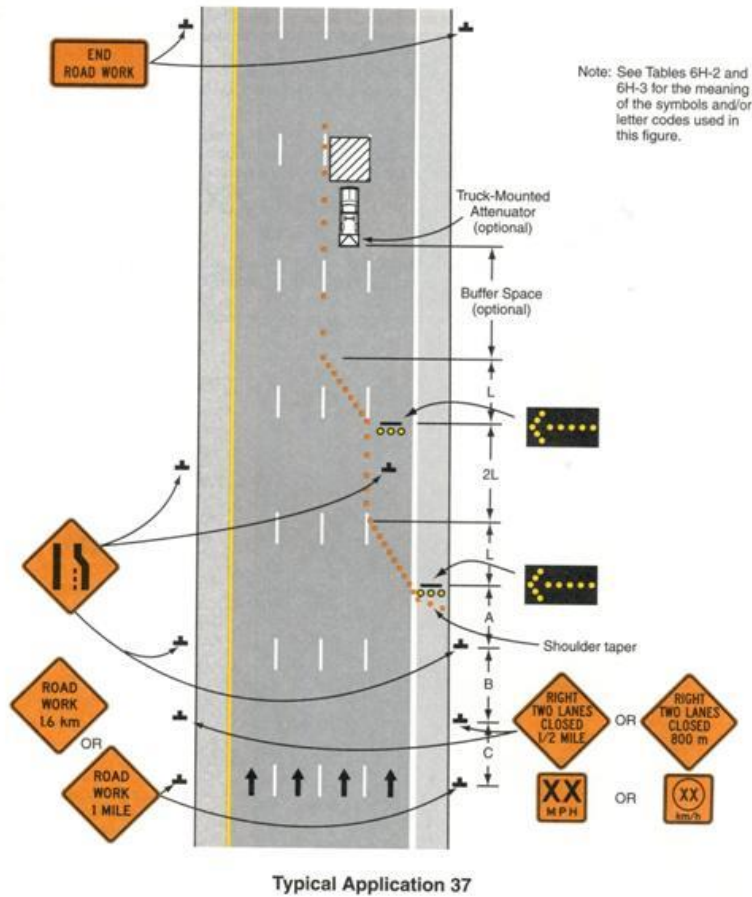
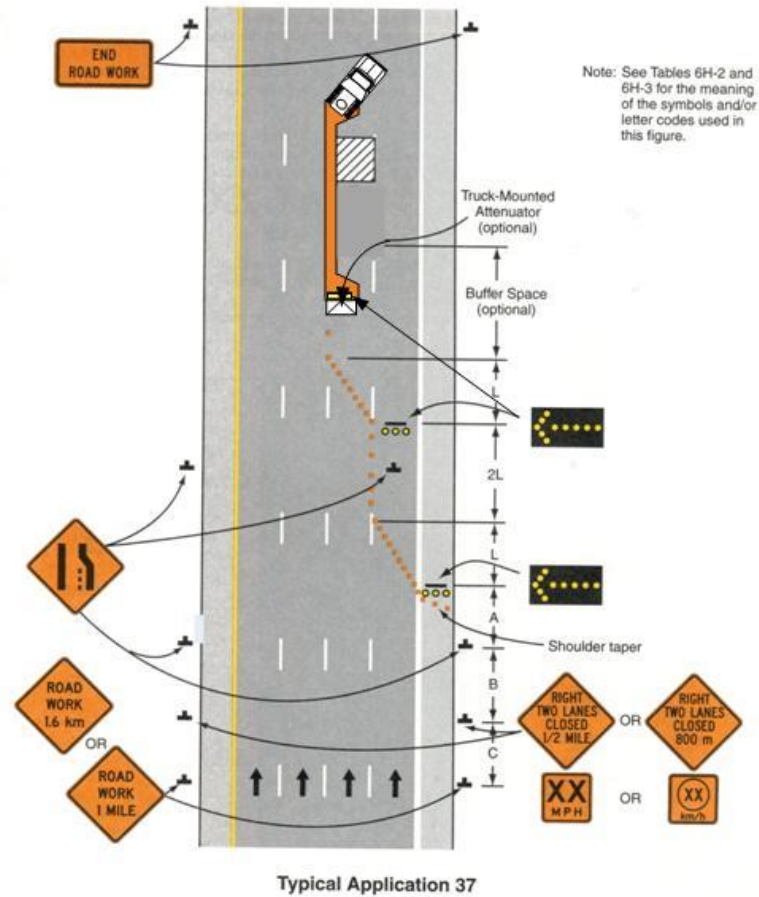


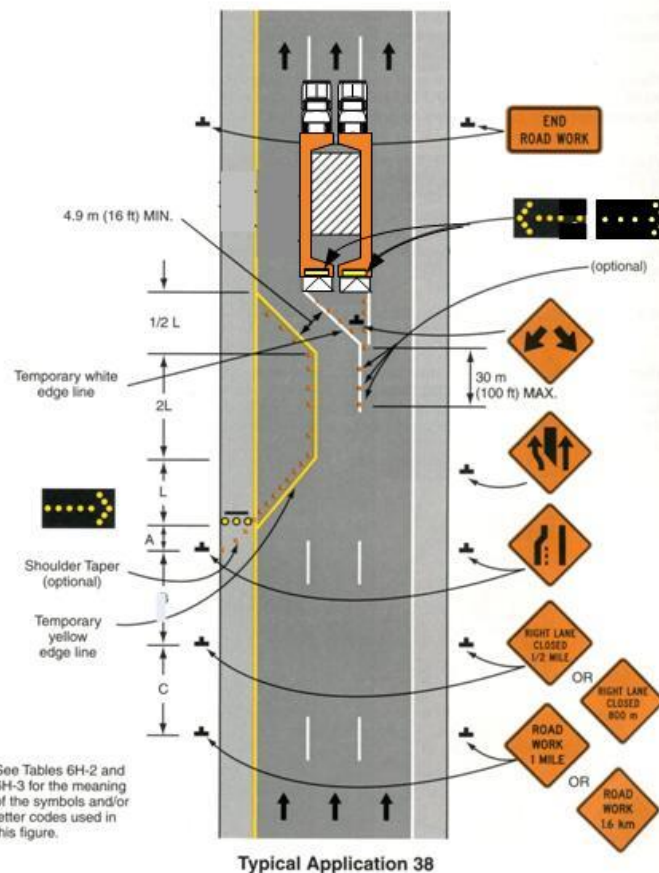
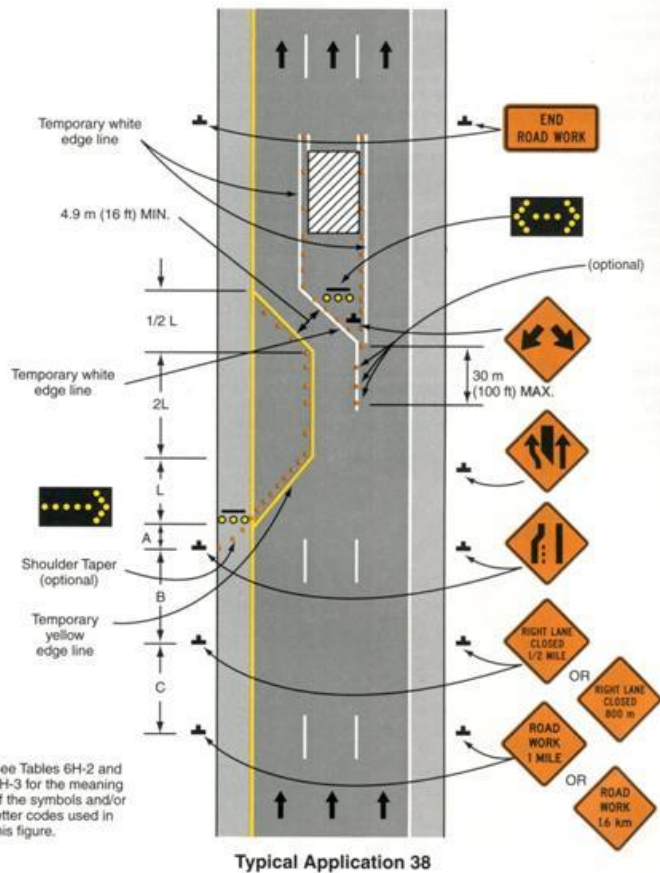
Figure 6H-37. Double Lane Closure on Freeway (TA-37)
Modified With Mobile Barrier



TA-38 Interior Lane Closure on Freeway

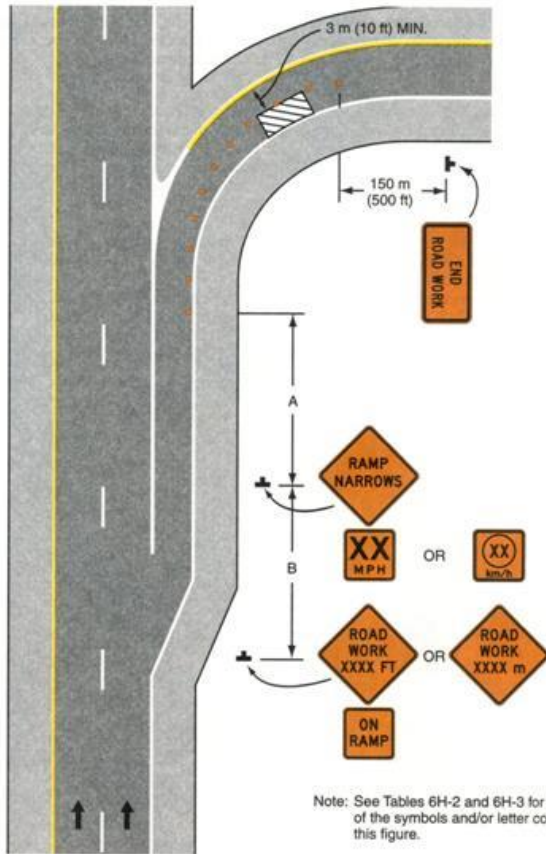
Figure 6H-38. Interior Lane Closure on Freeway (TA-38)

Figure 6H-38. Interior Lane Closure on Freeway (TA-38)
Modified With Mobile Barrier



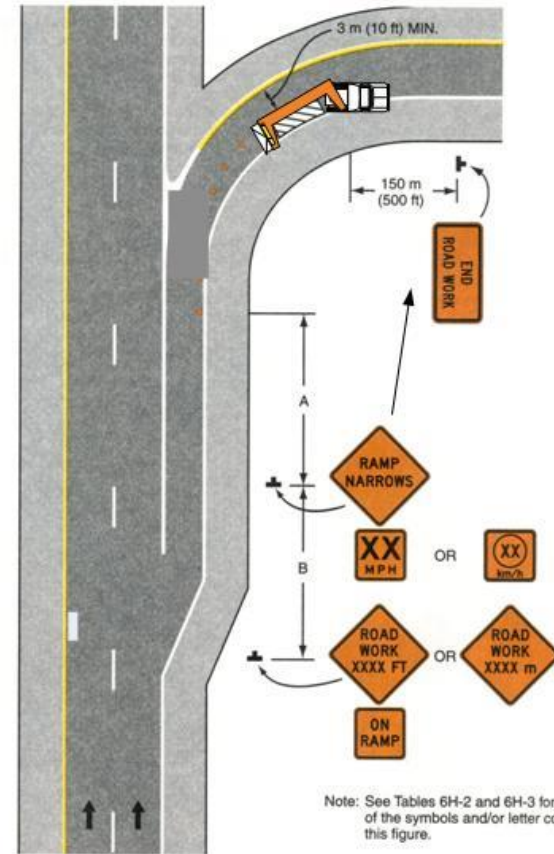
TA-38 Interior Lane Closure on Freeway

Figure 6H-43. Partial Exit Ramp Closure (TA-43)



Typical Application 43

Figure 6H-43. Partial Exit Ramp Closure (TA-43)
Modified With Mobile Barrier



Typical Application 43